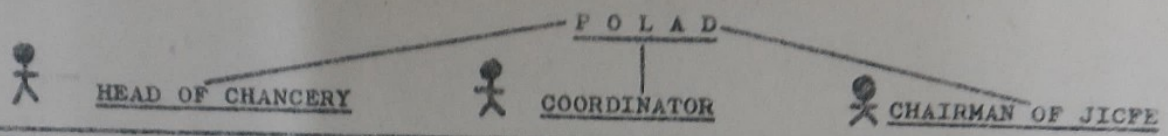


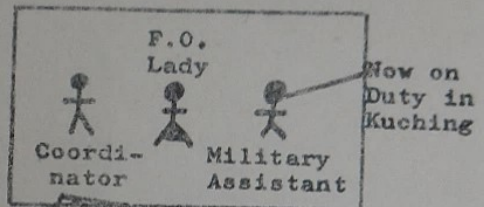
(A)



Coordinator's Main Functions

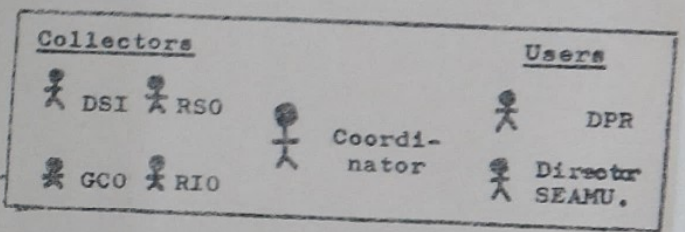
1. Exploitation of Phoenix Park and Diplomatic Information for counter-confrontation purposes.
2. Guidance to S.E.A.M.U.
3. Guidance to PSYOPS Officers.
4. Unorthodox measures.
5. Liaison with H.M. Missions, mainly Djakarta, Kuala Lumpur and Kuching.
6. Contacts with publicists, mainly in Singapore, and via Kuala Lumpur and Hong Kong.

Coordinator's Office



Coordinator's Method of Work

Weekly Meeting of collectors and users of intelligence.

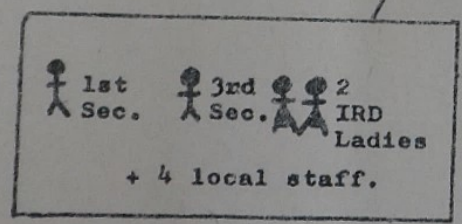


Ad Hoc contacts between meetings.

S.E.A.M.U. (I.R.D. STAFF)

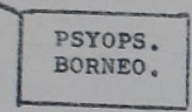
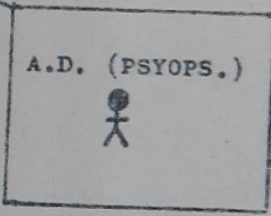
Cost
(Excluding Salaries).

1965: £30,000
 1966: £28,300 (estimated)



S.E.A.M.U.'s Main Functions

1. Black Indonesian Newsletter.
2. Research on Indonesia
3. Services to PSYOPS.
4. Various propaganda activities (minimal contacts with publicists).



TOP SECRET

to the National Archives' terms... Further information is given in the... National Archives' leaflets